

The thread chamfer  $1 \pm 0.1 \times 45^\circ$  is made prior to the thread rolling operation

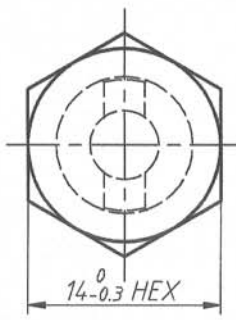
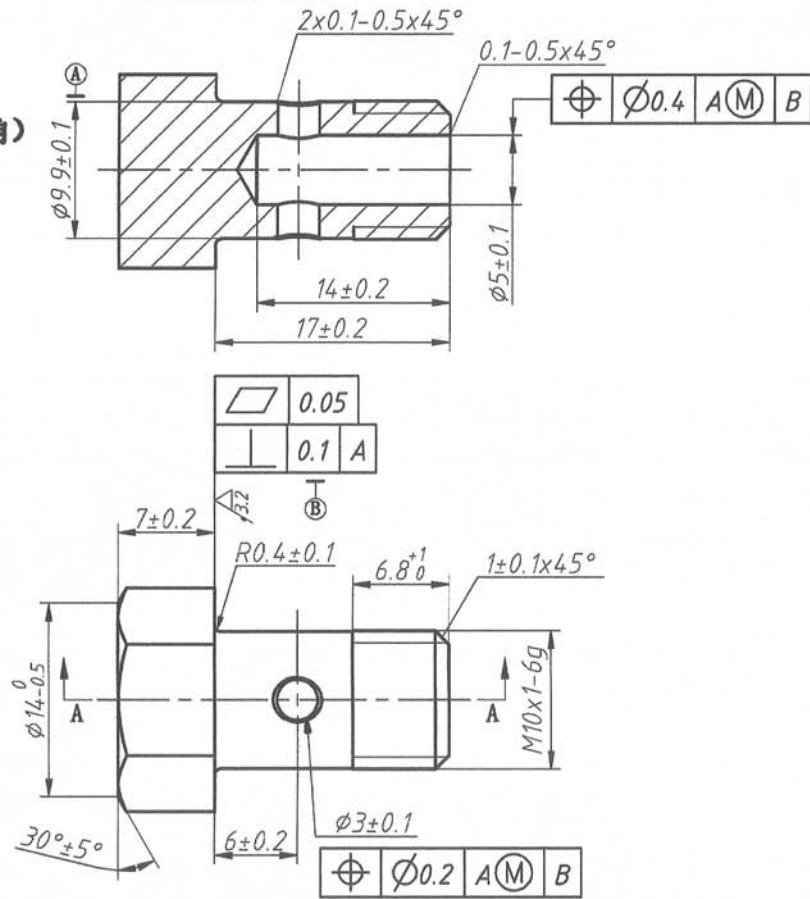
(螺纹端倒角  $1 \pm 0.1 \times 45^\circ$  为加工螺纹前棒料端部的倒角)

The chamfer  $2 \times 0.1 - 0.50 \times 45^\circ$  is the smallest part of the chamfer at the edge of the hole Dia. 3.

(孔倒角  $2 \times 0.1 - 0.50 \times 45^\circ$  是Dia.3孔二端孔边缘一圆内最小的倒角)

REV 更改号	DATE 日期	REVISION DETAILS 更改内容	APPD 审核批准
A	OCT. 24. 2018	Production issue	

SECTION A-A



UNLESS SPECIFIED  
ALL DIMENSIONS IN mm,  
MACHINED SURFACES  $Ra=3.2\mu m$ ,  
ANGLE TOLERANCES  $\pm 5^\circ$ ,  
Other tolerance except angles,  
in accordance with  
GB/T1804-2000(ISO2768-1)-m  
and GB/T1184-1996(ISO2768-2)-m

其它事项,  
图示尺寸单位为mm,  
未注机加工表面粗糙度  $Ra=3.2\mu m$ ,  
未注角度公差  $\pm 5^\circ$ ,  
其它未注公差 (除角度外) 均按:  
GB/T1804-2000(ISO2768-1)-m 和  
GB/T1184-1996(ISO2768-2)-m

<b>Zhejiang Gaocheng Autoparts Co.,Ltd</b>			
PART No 零件名	41332-M10BBOLT		
SCALE:	APPD: Zhang 批准	DRN: 制图	余德胜
NTS	DATE: 日期 2018. 10. 24	CHK: 审核	詹永斌

MATERIAL	Chinese steel 40Cr	材质: 40Cr
FINISH	Remove all sharp edges,burrs,slivers and swarf, break all edges 0.127-0.254mm. ZINC PLATING WITH 8um MICRONS MINIMUM PLATING THICKNESS AND TRIVALENT CHROMATE PASSIVATION AND WITHSTAND 96 HRS TO WHITE / 144 HS TO RED RUST IN SALT SPRAY TEST.	去除所有毛刺, 铁屑等残留物, 锐边倒钝0.127-0.254mm. 镀锌, 三价铬钝化, 银白色, 盐雾试验96小时无白斑, 144小时无红锈, 镀锌层厚度大于8um.